



# ACCOMMODATION *Schools*



*I love you xx*





# Contents

About Us	<b>3</b>
Facilities	<b>6</b>
Attractions/ Things to Do	<b>7</b>
Accommodation	<b>8</b>
Bedroom Configuration	<b>9</b>
Park Plan	<b>15</b>
Contact	<b>16</b>





## About Us

The Retreat Port Stephens is a unique tourism development, backing directly onto the largest living sand dune system in the Southern Hemisphere.

The Retreat is located in Anna Bay with the local shops just a 2 minute drive. We are central to all the activities and attractions that Port Stephens has to offer, but with the secluded and peaceful nature setting of the bush.

We can also assist with the planning of your itinerary and book local attractions and facilities. National Parks offer great educational talks and also guided tours. All of the attractions and facilities are within a 10 minute travel time which means that many activities can be planned for a day.





The Retreat's accommodation buildings are all fully self contained with private kitchens, bathrooms, lounge rooms and dining areas. All beds are ready made and towels can be hired or guests can bring along their own.

**Family buildings available are:**

- LODGE: sleeps up to 15 guests
- THE RANCH: sleeps up to 8 guests
- 2 x DUPLEXES: each sleeps up to 12-15 guests
- 4 x CABINS: each sleeps up to 2-5 guests
- 3 x BUNGALOWS: each sleeps up to 4-6 guests

The Duplexes are joined by a main wall. There are internal doors interconnecting the 2 Duplexes and these can be unlocked upon request required when both Duplexes have been reserved. This allows for easy internal access.

**Check In / Out times:**

Check In 2.00pm / Check Out 10.00am



# School Camps

School groups have the option of fully catered meals, self cook food packages or full self catering. We have suggested meal options but we are able to provide a more comprehensive catering plan to suit your group depending on if you are mainly on site or off site. Our catering team are highly recommended and can cater to all dietary needs.

The Retreat has a dining room for when catering has been arranged and this is located directly behind the games room. When not being used as a dining room this is converts into an extension of the games room. The Retreat's games room has the flexibility of turning in to an activities room, conference room, or just an open area for group and team building activities. There is a white board available and additional projectors and screens can be hired when required.

The Retreat has activity ideas that can be carried out onsite including Trivia questions and answers, outdoor activity toys, DVD library and an indoor bowls mat. The Retreat can also assist with the planning of your itinerary and book local attractions and facilities. National Parks offer great educational talks and also guided tours. Port Stephens, as an area, covers a wide Range of subjects including Geography, History, Marine Studies, Aboriginal Studies and Tourism.

All of the attractions and facilities are within a 10 minute travel time which means that many activities can be planned for a day. Additional info such as Risk management and group activity costs can be obtained upon request.







## Facilities

### On site facilities include:

- Covered BBQ areas
- Salt water swimming pool
- Kids play ground
- Games room / recreational hall
- Tours booking office
- Wildlife day and night
- Bus, boat and trailer parking
- Volley ball net and open areas for ball games
- Private and peaceful nature setting



# Attractions / Things To Do

## Local attractions available are:

- Dolphin & Whale Watch Cruises
- 4WD Tours - Port Stephens 4WD, Hummer Tours, Bush Mobile
- 3David Grahams Golf Complex
- Quad Bike King - 1 or 2 hour rides
- Horse Riding - Bush, lagoon or beach rides
- Bush Walking - In the Tomaree National Park
- Toboggan Hill Park
- Irukandji Shark & Ray Centre
- Parasailing
- Sand boarding, surf lessons and kayaking
- Murrook Indigenous Education Centre
- Snorkeling and Scuba Diving
- National Park Guided Tours - contact us for times and rates
- Koala Habitat - On the Tiligerry Peninsula
- Sea Kayaking - Not available during winter
- Surf Lessons - Not available during winter
- Oakvale Farm - Pat a Koala and hand feed Kangaroos
- Camel Rides - On the sand dunes
- Push Bike Hire





# Accommodation

For all school groups we recommend The Lodge, The Duplexes and The Ranch for students and staff.

When there are very large school groups then we also have our cabins and Bungalows. At The Retreat we take the time to speak with the camp organiser and advise on how best to accommodate the students, staff, careers and drivers based on what the organiser requested and the age of the students. Generally we will allocate a separate bedroom within the group buildings for staff to be accommodated. Additional staff are best allocated in The Ranch as this over looks all of the group buildings assisting with the monitoring of all students.

The Retreat will accommodate 1 FOC Bus Driver per full bus of students. So approximately 60 students. Also for every 20 students a teacher or staff member will stay FOC.

All catering is charged per person including any FOC's. All group building guests are required to bring along their own towels. Bed linen is provided on all beds.







## BEDROOM CONFIGURATIONS

CABIN 2	BDR 1 1 QUEEN	OPEN PLAN 1 DOUBLE + 1 SINGLE (TRI-BUNK)	5
CABIN 4	BDR 1 1 QUEEN	OPEN PLAN 1 DOUBLE + 1 SINGLE (TRI-BUNK)	5
CABIN 5	BDR 1 1 QUEEN	OPEN PLAN 1 DOUBLE + 1 SINGLE (TRI-BUNK)	5
CABIN 7	BDR 1 1 QUEEN	OPEN PLAN 1 DOUBLE + 1 SINGLE (TRI-BUNK)	5
BUNGALOW 1	BDR 1 1 QUEEN	BDR 2 4 SINGLE BEDS (BUNKS)	6
BUNGALOW 3	BDR 1 1 QUEEN	BDR 2 4 SINGLE BEDS (BUNKS)	6
BUNGALOW 6	BDR 1 1 QUEEN	BDR 2 4 SINGLE BEDS (BUNKS)	6
THE RANCH	BDR 1 1 KING BED*		2
	BDR 2 1 KING BED* + 2 SINGLES		4
	BDR 3 1 KING BED*		2
			8 GUESTS
DUPLEX 10	BDR 1 1 TRIBUNK + 2 SINGLES		5
	BDR 2 1 TRIBUNK + 2 SINGLES		5
	BDR 3 1 TRIBUNK + 2 SINGLES		5
			12-15 GUESTS
DUPLEX 11	BDR 1 1 TRIBUNK + 2 SINGLES		5
	BDR 2 1 TRIBUNK + 2 SINGLES		5
	BDR 3 1 TRIBUNK + 2 SINGLES		5
			12-15 GUESTS
THE LODGE	BDR 1 1 KING BED*		2
	BDR 2 1 KING BED*		2
	BDR 3 1 KING BED* + 1 SINGLE BED		3
	BDR 4 3 SINGLE BEDS		3
	BDR 5 2 SINGLE BEDS		2
	BDR 6 1 KING BED* + 1 SINGLE BED		3
			15 GUESTS

**TOTAL CAPACITY 67-91 GUESTS**

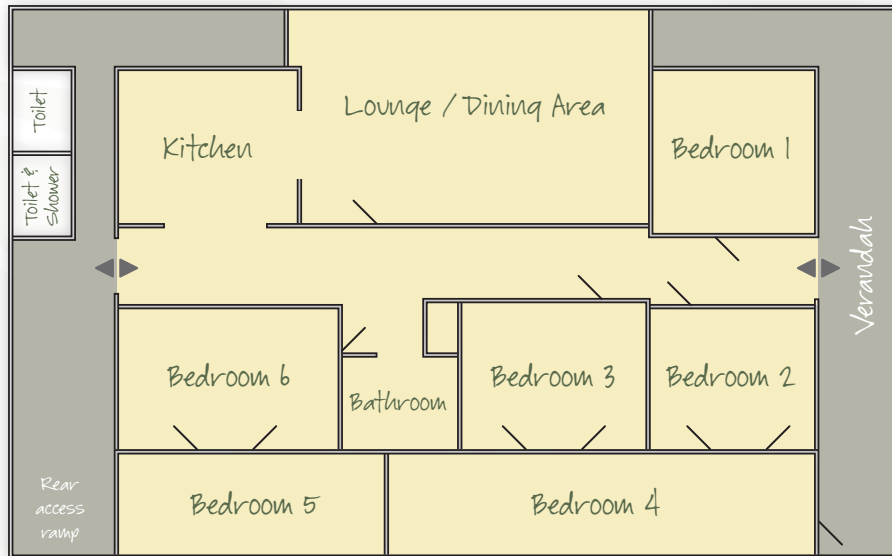
\*CAN SPLIT INTO 2 SINGLES UPON REQUEST



# The Lodge

- Sleeps 15 Guests
- Fully Self Contained
- 6 Bedrooms
- Huge Kitchen
- 3 x Bathrooms
- Beds are Ready Made
- Great Verandah
- Outdoor Settings
- Ceiling and wall fans
- Large Flat Screen TV and DVD Player
- Share Laundry area
- Large Car Parking Area
- Bus & Boat Parking Areas
- Bush and Pool View
- Close to BBQ and Camp Fire Area
- BYO towels

## THE LODGE LAYOUT



Note: Rooms are listed and areas around the veranda.  
There is a ramp access point at the rear of the building.



## THE LODGE BEDROOM CONFIGURATION

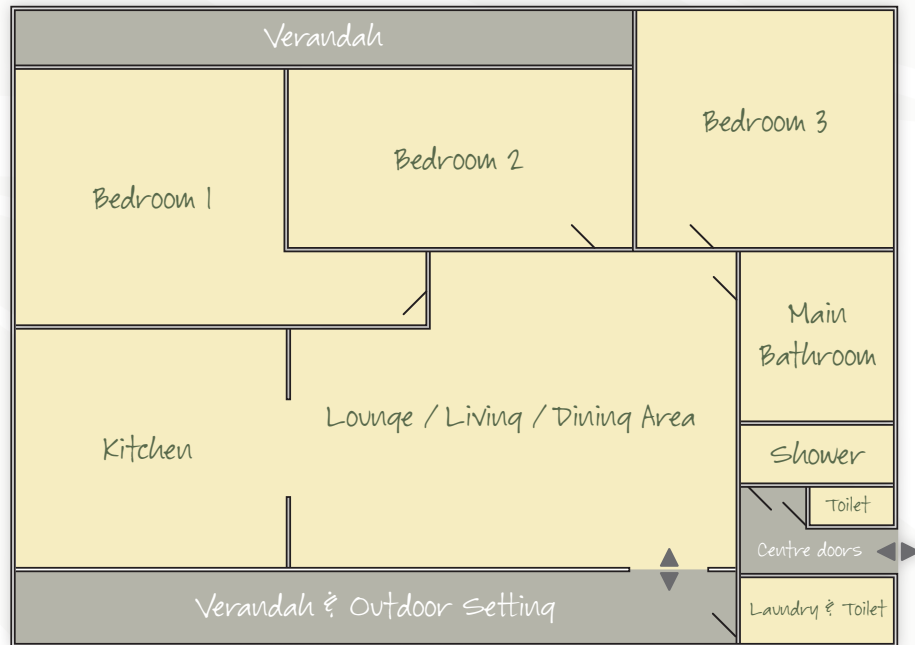
BEDROOM 1:	1 King Bed
BEDROOM 2:	1 King Bed
BEDROOM 3:	1 King Bed + 1 Single Bed
BEDROOM 4:	3 Single Beds
BEDROOM 5:	2 Single Beds
BEDROOM 6:	1 King Bed + 1 Single Bed



# Duplexes

- Sleeps 12-15 guests
- Fully self contained
- 3 bedrooms
- Huge Kitchen
- 2 x Bathrooms
- Beds are Ready Made
- Great Verandah
- Outdoor Setting
- Ceiling and Wall Fans
- TV and DVD
- Shared Laundry Area
- Double Carport
- Bush & Pool View
- Close to BBQ and Camp Fire Area
- Air Conditioned
- Bus Parking
- BYO towels

## THE DUPLEX LAYOUT



Note: Above plan for a Duplex which sleeps 15 guests.  
The centre door shown in this is able to be opened and allow the Duplexes to have internal access. Not shown on this layout are a small back veranda and double carport.



## THE DUPLEXES CONFIGURATION

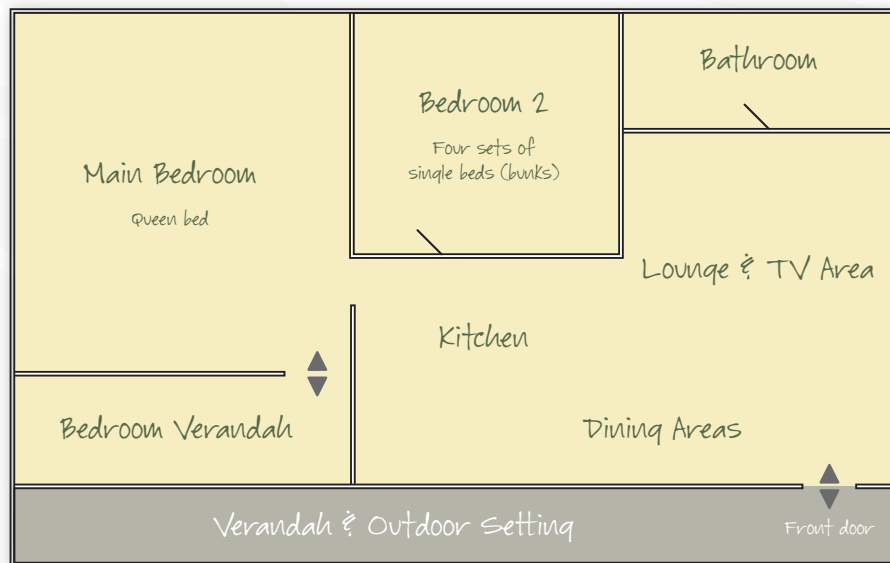
BEDROOM 1	Tri-bunk + 2 Singles
BEDROOM 2	Tri-bunk + 2 Singles
BEDROOM 3	Tri-bunk + 2 Singles



# Bungalows

- Sleeps up to 4-6 Guests
- Fully Self Contained
- Main Bedroom has a Queen Bed
- 2nd Bedroom 2 Bunk Beds
- Kitchen
- Bathroom
- Beds are Ready Made
- Great Verandah & Outdoor Setting
- Air-conditioned
- TV and DVD
- Share Laundry Area
- Carport
- Bush or Pool View
- Close to BBQ and Camp Fire Area

## THE BUNGALOW LAYOUT



Note: Also includes a single carport.  
Layout varies slightly in each Bungalow.



## THE BUNGALOW CONFIGURATION

MAIN BEDROOM	1 Queen
BEDROOM 2	4 Singles (bunks)



# Cabins

- Sleeps up to 2-5 guests
- Fully self contained
- Main bedroom has a queen bed
- Second bedroom open plan
- Kitchen
- Bathroom
- Beds are ready made
- Great verandah and outdoor setting
- Air-conditioned and ceiling fans
- TV and DVD
- Share laundry area
- Carport
- Bush or pool view
- Close to BBQ and camp fire area

## THE CABIN LAYOUT



Note: Also includes a single carport.



## CABIN CONFIGURATION

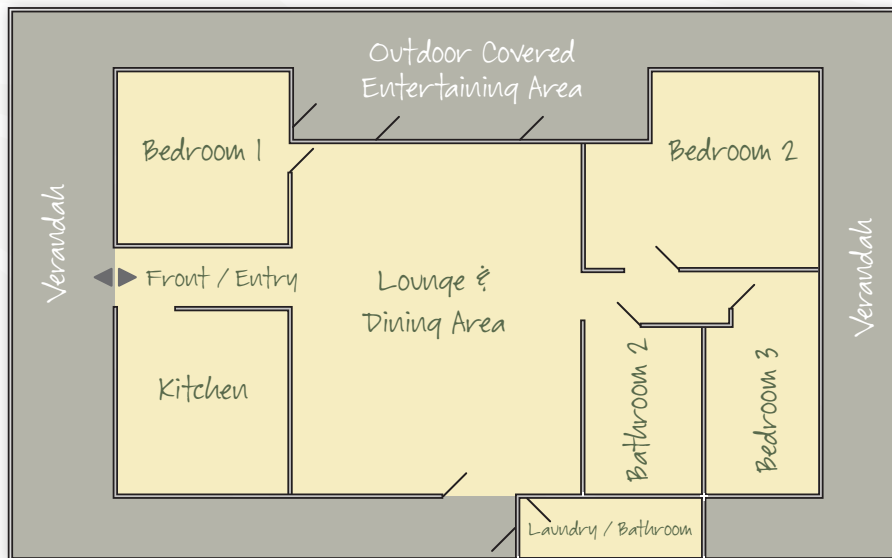
MAIN BEDROOM	1 Queen
BEDROOM 2	1 Tri-bunk (1 double + 1 single)



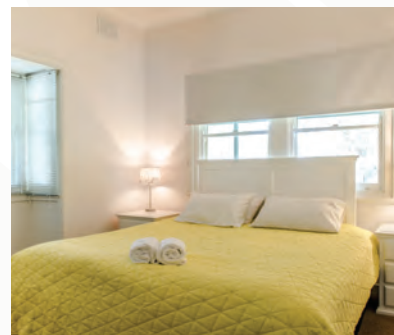
# The Ranch

- Sleeps up to 8 guests
- Fully self contained
- 3 bedrooms
- Large fully equipped kitchen
- 2 x bathrooms
- Beds are ready made
- Large wrap around verandah
- Large covered outdoor area
- Ceiling and wall fans
- Large flat screen TV and DVD player
- Private laundry area
- Double carport
- Bus and boat parking areas
- Central to all facilities
- Close to BBQ and camp fire pit area

## THE RANCH LAYOUT



Note: There is a carport at the front entrance.

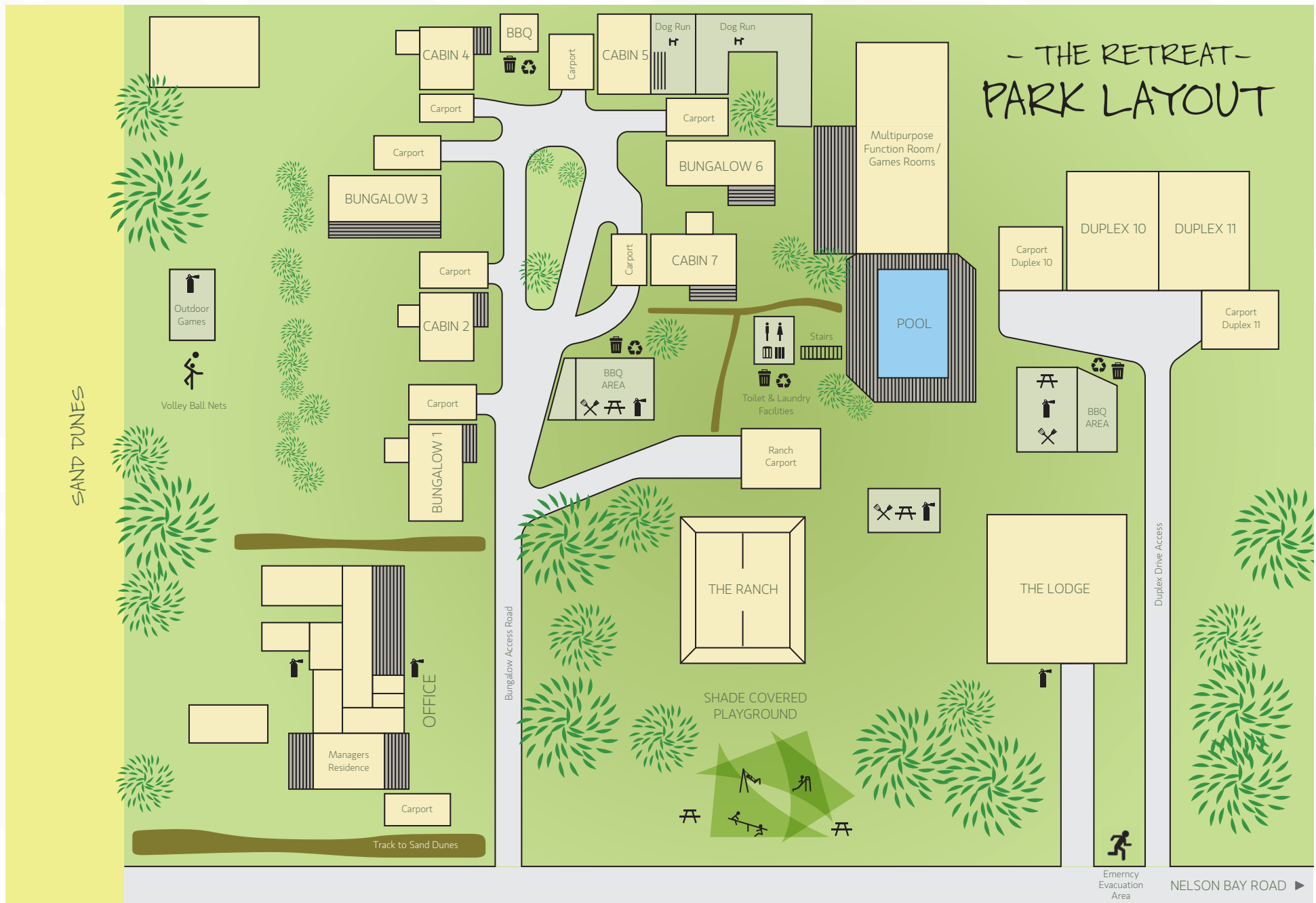


## THE RANCH BEDROOM CONFIGURATION

BEDROOM 1	1 King Bed*
BEDROOM 2	1 King Bed* + 2 singles
BEDROOM 3	1 King Bed*

\*can split into 2 singles upon request







# Contact

The Retreat Port Stephens  
4302 Nelson Bay Road,  
Anna Bay NSW 2316

P. (02) 4982 1244

F. (02) 4982 2880

E. [bookings@theretreatportstephens.com.au](mailto:bookings@theretreatportstephens.com.au)

**[www.theretreatportstephens.com.au](http://www.theretreatportstephens.com.au)**

Find us on Facebook and Twitter:

[facebook.com/theretreatportstephens](https://facebook.com/theretreatportstephens)

[twitter.com/theretreatps](https://twitter.com/theretreatps)

**How to find us:**

Our entrance is on the South Bound Lane  
between the two Anna Bay roundabouts.

**Proximity:**

Sydney 2.5 hrs, Newcastle 45 mins,

Williamtown Airport 20 mins,

Nelson Bay 8 mins

